



**Ravenhill Terrace | Rugeley | WS15 1BS**

**Offers In The Region Of £190,000**



## Summary

\*\* NO CHAIN \*\* IDEAL FOR FIRST TIME BUYERS \*\* IN NEED OF MODERNISATION \*\* THREE BEDROOMS \*\* OPEN PLAN LOUNGE DINING ROOM \*\* KITCHEN \*\* BATHROOM \*\* REAR GARDEN \*\* CLOSE TO AMENITIES & TOWN CENTRE \*\* VIEWING ADVISED \*\*

WEBBS ESTATE AGENTS are pleased to market this traditional, three bedroom semi detached home, located in a popular area of Brereton on Ravenhill Terrace. The property is in need of modernisation, viewing is advised. The property would be ideally suited to first time buyers looking to get their foot on the property ladder. Located close to amenities, useful transport links and a short distance to Rugeley Train Station and Rugeley Town Centre. The internal accommodation briefly comprises; entrance hallway, living dining room, kitchen, bathroom, three bedrooms and a rear garden.

## Key Features

- NO CHAIN
- IN NEED OF MODERNISATION
- OPEN PLAN LOUNGE DINING ROOM
- BATHROOM
- CLOSE TO AMENITIES & TOWN CENTRE
- IDEAL FOR FIRST TIME BUYERS
- THREE BEDROOMS
- KITCHEN
- REAR GARDEN
- VIEWING ADVISED

## Rooms and Dimensions

### Entrance Hallway

### Open Plan Lounge/Diner

25'10" x 11'8" (7.89 x 3.58)

### Kitchen

14'3" x 7'10" (4.35 x 2.41)

### Bathroom

9'1" x 5'5" (2.78 x 1.67)

### Landing

### Bedroom One

11'5" x 15'2" (3.48 x 4.64)

### Bedroom Two

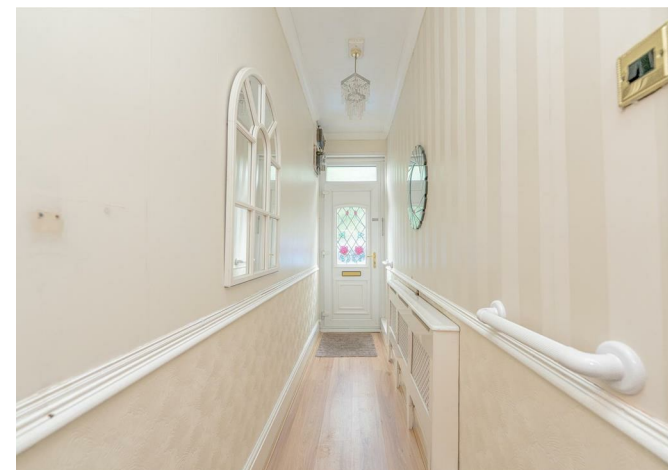
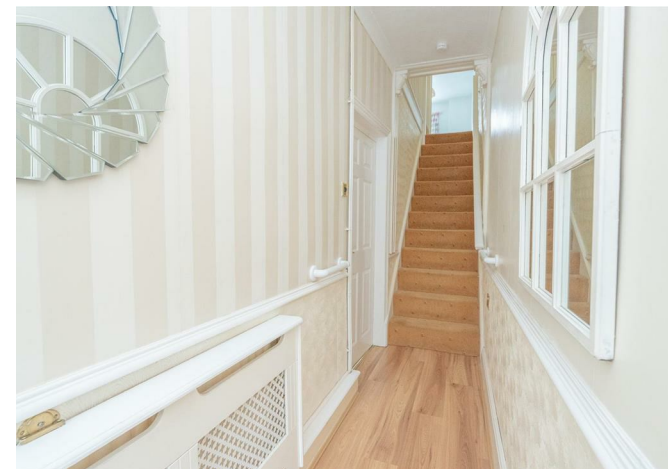
13'10" x 8'10" (4.24 x 2.71)

### Bedroom Three

9'10" x 7'11" (3.02 x 2.43)

### Garden

### IDENTIFICATION CHECKS - C







Webbs Estate Agents - endeavour to maintain accurate depictions of properties in Virtual Tours, Floor Plans and descriptions, however, these are intended only as a guide and purchasers must satisfy themselves by personal inspection.

